





# JEWELRY MAKING TOOLS

 [www.shrinathindustries.com](http://www.shrinathindustries.com)

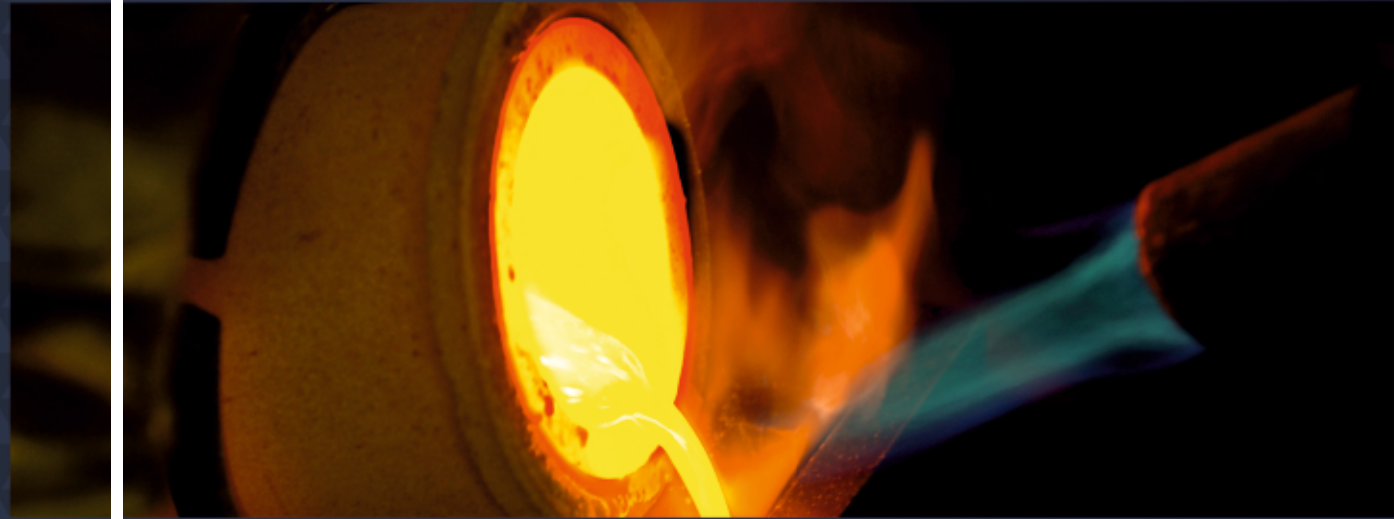
 [info@shrinathindustries.com](mailto:info@shrinathindustries.com)

Mfgd. By :  
**SHRINATH INDUSTRIES**  
E-141, G.I.D.C. Phase II,  
Dared, Jamnagar -361004

[www.shrinathindustries.com](http://www.shrinathindustries.com)



# CONTENTS



## About Company

Since Our Establishment In 1992, We Have Proven Our Expertise And Talent Under The Brand Name **SI** Before And Now. We Are One Of The Leading And Most Authorized Jewelry Making Tools Manufacturers & Exporters From India. We Are Proud To Inform That We Do Offer A Complete Range Of Product Catalog For Our Clients Who Are In Search Of Jewelry Making Tools. Just Have A Look At All Of Our Products From The Catalog And Browse Through The Entire Range To Pick Your Required Products. You Can Mail Us For The Best Quality Products At The Most Affordable Price At The Right Time.

### In House Production

We Do Manufacture Our All Products With High End Machines Under Supervising Of Our Experts Only

### Quality Policy

We Ensure That A Manufactured Product Or Performed Service Adheres To A Defined Set Of Quality Criteria And Meets The Requirements Of Our Client.

### Customization

We Have A Professional Team Of Expert Hands Who Are Able Enough To Give A Personalized And Customized Product/service/tool Or Support To Our Clients.

### Our Mission

Strive To Be The Industry Standard In Quality And Service To Customers & Maintain A Superior Level Of Integrity In Interactions With Business Partners And Associates.

### Our Vision

To Become The World's Best Manufacturers & Exporters By Achieving Sustainable And Consistent Growth By Providing Consumer Preferred Products That Enable Superior Quality, Accuracy And Value Benefits To Our Business Partners/customers.

01	Sizers / Gauges	02-03
02	Ring Mandrels & Stick	04-05
03	Pin Vise	06-07
04	Mandrels	08-09
05	Diamond Sieves	10-11
06	Diamond Gauge	12-13
07	Eye Magnifiers & Loupes	14-15
08	Dapping Tools	16-17
09	Doming Blocks	16-17
10	Doming Punches	18-19
11	Swage Block	18-19
12	Wooden Doming Blocks	20-21
13	Disc Cutters	22-23
14	Jewelry Dies	24-25
15	Ring & Bangle Machines	26-27
16	Miscellaneous	28-29
17	Third Hands	28-29
18	Brass Joints	28-29
19	Saw Frames	28-29
20	Other	28-29
21	Hammers	30-32



# MEASURE

There are several systems for denoting the sizes of jewellery rings in use around the world



## Sizers / Gauges



**Finger Ring Sizer Universal**  
**Size** : 1-36, 41-76, 1-15, 13-24  
 (36 Rings)  
**Metal** : Chromed Brass.  
**Code** : SJT\_S001



**Wide Band Finger Ring Sizer**

Code	Size	Total Rings
SJT_S002A	1-15. 1/2 Size Increments.	29
SJT_S002B	1-36, 41-76	36

Rings Are 3mm Wide. Metal : Chromed Brass



**Half Round Finger Ring Sizer**

Code	Size	Total Rings
SJT_S003A	1-15. 1/2 Size Increments.	29
SJT_S003B	1-36, 41-76	36

Rings Are 3mm Wide. Metal : Chromed Brass



**Wide Band Finger Ring Sizer**

Code	Size	Total Rings
SJT_S004A	1-15. 1/2 Size Increments.	29
SJT_S004B	1-36, 41-76	36

Rings Are 6mm Wide. Metal : Chromed Brass



**Bangle/Bracelet Sizer**  
**Size** : 1 To 14  
**Metal** : Chromed Brass.  
**Code** : SJT\_S005



**Bangle/Bracelet Sizer**  
**Size** : 1 To 27  
**Metal** : Chromed Brass.  
**Code** : SJT\_S006



# Ring Mandrels & Sticks

## Sizers



1 to 36 Ring Gauges with  
Universal Standard Ring Stick  
Code : SJT\_S007

## Ring Mandrels & Sticks



Ring Mandrel with Stand  
Code : SJT\_RM001



Aluminum Ring Stick 10"  
Round Shaped Handle  
Code : SJT\_RM002



Aluminum Ring Stick 10"  
Regular  
Code : SJT\_RM003



Aluminum Ring Stick Black  
Code : SJT\_RM004



Ring Mandrel Aluminum (1-15)  
Code : SJT\_RM005



Chromed Ring Stick Universal  
(1-36) (41-76) (1-15) (13-24)  
Code : SJT\_RM006



Aluminum Ring Stick (A-Z)  
(1-15) (40-78)(12-24)  
Code : SJT\_RM007



MS Ring Mandrel  
Code : SJT\_RM008



Ring Mandrel Aluminum With  
Knurling Handle (4-14)  
Code : SJT\_RM009



Stepped Ring Mandrel (4-13)  
Code : SJT\_RM010



Iron Bracelet Mandrel  
Code : SJT\_RM011



Iron Mandrel 1.5" x 12"  
Code : SJT\_RM012



Iron Mandrel 2" x 12"  
Code : SJT\_RM013



Iron Mandrel 1.5" x 12"  
Step Type  
Code : SJT\_RM014



Pointed Ring Rod 6" x 9.5mm  
Code : SJT\_RM015



Pointed Ring Rod 6" x 12mm  
Code : SJT\_RM016



Pointed Ring Rod 8" x 12mm  
Code : SJT\_RM017



Pointed Ring Rod 10" x 12mm  
Code : SJT\_RM018



Pointed Ring Rod 12" x 12mm  
Code : SJT\_RM019



Steel Ring Rod 1" x 10"  
Code : SJT\_RM020



Steel Ring Rod 1" x 12"  
Code : SJT\_RM021



Steel Ring Rod 1" x 15"  
Code : SJT\_RM022



15" Round Bracelet Mandrel  
Code : SJT\_RM023



Wooden Step Mandrel  
Code : SJT\_RM024



# TRANSFORM

One of the simplest ways to transform metal sheet into a volumetric shape.



# Pin Vise



**Double Ended Pin Vise 3.5"**  
Code : SJT\_PV001



**Double Ended Pin Vise 3.75"**  
Code : SJT\_PV002



**Double Ended Pin Vise 4.5"**  
Code : SJT\_PV003



**Double Ended Pin Vise Dual Color**  
Code : SJT\_PV004



**Double Ended Pin Vise Knurling**  
Code : SJT\_PV005



**Double Ended Pin Vise Nickelled 3.5"**  
Code : SJT\_PV006



**Double Ended Pin Vise Nickelled 3.75"**  
Code : SJT\_PV007



**Double Ended Pin Vise Nickelled 4.5"**  
Code : SJT\_PV008



**Double Ended Spiral Pin Vise**  
Code : SJT\_PV009



**Mini Drill With Spring**  
Size : 95mm, 105mm  
Code : SJT\_PV010



**PCB Drill**  
Code : SJT\_PV011



**Pencil Pin Vise**  
Code : SJT\_PV012



**Hexagonal Heavy 4.5"**  
Code : SJT\_PV013



**Hexagonal Jumbo 4"**  
Code : SJT\_PV014



**Hexagonal Light 3.5"**  
Code : SJT\_PV015



**Hexagonal Light 4"**  
Code : SJT\_PV016



**Pin Vise Thick Black Nut**  
Code : SJT\_PV017



**Swivel Head Pin Vise Deluxe**  
Code : SJT\_PV018



**Swivel Head Pin Vise Regular**  
Code : SJT\_PV019



**Wood Knob Vise**  
Code : SJT\_PV020



**Wood Graver Chuck**  
Code : SJT\_PV021



**Black Graver Chuck**  
Code : SJT\_PV022



**Wood Graver Revolving Chuck**  
Code : SJT\_PV023

# DRILL

fairly inexpensive specialized hand tool used a lot in miniature work.



# MOUNT

For Mounting Flexible Abrasive Discs, Small Rotary Brushes, And Other Small Rotary Tools With Mounting Holes.



## Mandrels



**Miniature Abrasive Band Arbours**

Code	No.	Diameter	Shank
SJT_M001A	1	1/2"	3/32"
SJT_M001B	2	1/2"	1/8"
SJT_M001C	3	1/4"	3/32"
SJT_M001D	4	1/4"	1/8"
SJT_M001E	5	3/4"	3/32"
SJT_M001F	6	3/4"	1/8"
SJT_M001G	7	3/8"	3/32"
SJT_M001H	8	3/8"	1/8"



**Threaded Mandrel with Hexagonal Nut**

Code	Type	Shank
SJT_M002A	3/32" Dia. Thread (5/8"long) W/Nut	3/32"
SJT_M002B	1/8" Dia. Thread (5/8"long) W/Nut	1/8"
SJT_M002C	3/32" Dia. Thread (5/8"long) W/Nut	3/32"



**Buff Mandrel**

Code	Type	Shank
SJT_M003	1/8" Long Tapered Thread	3/32"



**Tapered Thread Mandrel**

Code	Type	Shank
SJT_M004A	1/8" Long Tapered Thread	3/32"
SJT_M004B	1/8" Long Tapered Thread	1/8"



**Tool Shaft**

Code	Type	Shank
SJT_M005	Threaded Mandrel w/Nut & Washer	3/32"



**Mandrel Reinforced Screw**

Code	Diameter	Shank
SJT_M006	5/16"	3/32"



**Mandrel Reinforced Screw**

Code	Diameter	Shank
SJT_M007	1/8"	3/32"



**Mandrel Reinforced Screw**

Code	Diameter	Shank
SJT_M008	1/16"	3/32"



**Mandrel Reinforced Screw**

Code	Diameter	Shank
SJT_M009	1/4"	1/4"



**Screw Mandrel**

Code	Diameter	Shank
SJT_M010	3/32"	3/32"



**Reinforced Mandrel**

Code	Type	Shank
SJT_M011A	Reinforced Split Mandrel	3/32"
SJT_M011B	Reinforced Split Mandrel	1/8"



**Straight Split Mandrel**

Code	Type	Shank
SJT_M012	Straight Split Mandrel	3/32"



**Tapered Split Mandrel**

Code	Type	Shank
SJT_M013	Tapered Split Mandrel	3/32"



**Polishing Point Mandrels**

Code	Diameter	Shank
SJT_M014A	0.5mm	3/32"
SJT_M014B	2mm	3/32"
SJT_M014C	3mm	3/32"



# ACCURATE

Quickly And Precisely Sorting Rough Or Polished Stones Requires A Quality Diamond Sieve



## Diamond Sieves



### Diamond Sieves IDSS Type

Code	Sieves Diameter Size In mm	Total No. Of Plates	Holes Size And Plates No. As Per International Charts Only
SJT_DS001A	32	23	
SJT_DS001B	32	42	
SJT_DS001C	47	23	
SJT_DS001D	47	42	
SJT_DS001E	66	23	
SJT_DS001F	66	42	
SJT_DS001G	80	23	
SJT_DS001H	80	42	
SJT_DS001I	107	23	
SJT_DS001J	107	42	



### Diamond Sieves Regular

Code	Sieves Diameter Size In mm	Total No. Of Plates	Holes Size And Plates No. As Per International Charts Only
SJT_DS002A	47	42	
SJT_DS002B	66	42	
SJT_DS002C	66	75	
SJT_DS002D	80	42	
SJT_DS002E	80	75	
SJT_DS002F	107	42	



# MEASURING

More Accurate Than The Simple Diamond Gauge  
Because You Are Measuring The Entire Stone Instead Of Just The Top



## Diamond Gauge



**Degree Gauge 0-72**  
Code : SIJT\_DG001



**Diamond Gauge 0-60**  
Code : SIJT\_DG002



**Gauge in Graduations 1-15mm**  
Code : SIJT\_DG003



**Pocket Degree Gauge 10mm Capacity**  
Code : SIJT\_DG004





# Eye Magnifiers & Loupes



# INSPECT

Magnification Is Good To Use For Inspecting Jewelry, Hallmarks And Grading Diamond Clarity.



**Aluminium Textile Eye Magnifier**  
Code : SJT\_EM001



**Chromed Brass Textile Eye Magnifier**  
Code : SJT\_EM002



**Eye Magnifier 10x German Type**  
Code : SJT\_EM003



**Eye Magnifier 10x German Type 2**  
Code : SJT\_EM004



**Eye Magnifier 12x**  
Code : SJT\_EM005



**Eye Magnifier 14x Imported**  
Code : SJT\_EM006



**Eye Magnifier 16x Imported**  
Code : SJT\_EM007



**Eye Magnifier 16x**  
Code : SJT\_EM008



**Eye Magnifier 18x Imported**  
Code : SJT\_EM009



**Eye Magnifier Nickelled 10x**  
Code : SJT\_EM010



**Eye Loupe 10X Triplet Type Hexagonal Chromed & Rubber Grip**  
Code : SJT\_EM011



**Eye Loupe 10X Triplet Type Hexagonal Chromed**  
Code : SJT\_EM012



**Eye Loupe 10X Triplet Type Chromed**  
Code : SJT\_EM013



**Eye Loupe 10X Triplet Type Satin Finished**  
Code : SJT\_EM014



**Eye Loupe 10X Triplet Type Chromed & Rubber Grip**  
Code : SJT\_EM015



**Tripod Loupe 10x Nickelled**  
Code : SJT\_EM016



**Eye Loupe Nickelled 10x Triplet**  
Code : SJT\_EM017



**Portable Loupe 3 in 1 Triplet Type Chrome With Rubber Grip**  
Code : SJT\_EM018



Doming Blocks

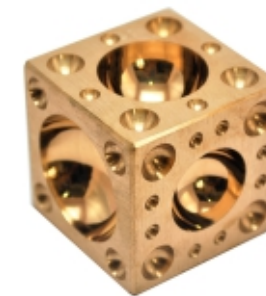


Steel Dapping Plate

Code	Plate Size	Hole Size	Total Holes
SIJT_DB001	5" X 2.5" X 1"	2.7mm To 25mm	27

Flat Designer Dapping Block

Code	Size	Thickness	Half Round	Round	Total Holes
SIJT_DB002A	4" X 2.5"	24mm	2.4 To 21.5	4 To 24.5	22
SIJT_DB002B	2" X 2.5"	23mm	3.5 To 17.5	3.5 To 17.5	17



Gun Metal Doming Block

Code	Size In mm	Approx Weight In Kg.
SIJT_DB003A	20 X 20	0.550
SIJT_DB003B	25 X 25	0.120
SIJT_DB003C	28 X 28	0.150
SIJT_DB003D	30 X 30	0.210
SIJT_DB003E	35 X 35	0.280
SIJT_DB003F	38 X 38	0.310
SIJT_DB003G	42 X 42	0.450
SIJT_DB003H	45 X 45	0.500
SIJT_DB003I	48 X 48	0.680
SIJT_DB003J	51 X 51	0.780
SIJT_DB003K	57 X 57	1.200
SIJT_DB003L	63 X 63	1.650
SIJT_DB003M	76 X 76	2.800

Brass Doming Block

Code	Size In mm
SIJT_DB004A	35 X 35
SIJT_DB004B	88 X 88
SIJT_DB004C	51 X 51
SIJT_DB004D	63.5 X 63.5
SIJT_DB004E	76 X 76

Steel Doming Block

Code	Size	Hole Size	Total Holes
SIJT_DB005A	1" X 1"	4mm To 13mm	12
SIJT_DB005B	1.5" X 1.5"	4mm To 30mm	17
SIJT_DB005C	2" X 2"	4.5mm To 40mm	18
SIJT_DB005D	2.5" X 2.5"	4.5mm To 45mm	21
SIJT_DB005E	2.75" X 2.75"	4.5mm To 50mm	21
SIJT_DB005F	3" X 3"	5mm To 60mm	21

# CREATE

Dapping Usually Involves Sinking Flat Metal Into A Depression In A Wood Or Metal Block To Create A Dish Shape.



## Doming Punches



### Doming Punch Regular

Code	Total Punch	Punch Size In mm	Rode Length In mm
SJUT_DP001A	16	1 To 16 Gauge	80
SJUT_DP001B	6	3.4 To 5.6	80
SJUT_DP001C	6	1.5 To 2.5 Extra Small	80
SJUT_DP001D	12	3.1 To 9 Light	80
SJUT_DP001E	12	4 To 12.5 Heavy	80
SJUT_DP001F	15	4 To 13.7	80
SJUT_DP001G	18	4 To 15.5	80
SJUT_DP001H	24	3.1 To 21.5	80
SJUT_DP001I	24	2 To 24.5 Extra Heavy	80
SJUT_DP001J	7	1.5 To 25	80



### Doming Punch Big

Code	Total Punch	Punch Size In mm	Rod Leanth In mm
SJUT_DP002A	No.1	22.5	90
SJUT_DP002B	No.2	22	90
SJUT_DP002C	No.3	23.5	90
SJUT_DP002D	No.4	25	90
SJUT_DP002E	No.5	28	90
SJUT_DP002F	No.6	31	90
SJUT_DP002G	No.7	34	90
SJUT_DP002H	No.8	37	90



### Doming Punch With Temper

Code	Total Punch	Punch Size In mm	Rod Leanth In mm
SJUT_DP003A	12	3.5 To 12	88.5
SJUT_DP003B	15	3.5 To 3.5	88.5
SJUT_DP003C	18	4 To 15	88.5
SJUT_DP003D	24	2.5 To 21.5	88.5
SJUT_DP003E	24	2.5 To 24.5	88.5
SJUT_DP003F	36	3 To 24.5	88.5



### Wooden U Channel Forming Block & Hammer

Code : SJUT\_DP004

Material Features
Steam Beech Wood
Weather Proof Wood
Unbreakable Wood

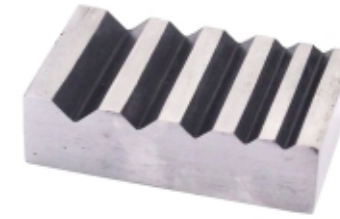


### Doming Punch With Magnetic

Code	Total Punch	Punch Size In mm	Rod Leanth In mm
SJUT_DP005A	12	3.2 To 11.5	9.2, 12, 14
SJUT_DP005B	12	12.3 To 24.7	15.5, 19, 22



## Swage Block



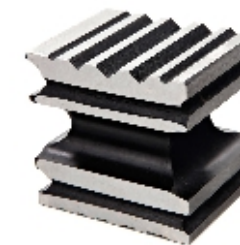
### Single Side Grooving Swage Block

Code	Size	Thickness	Grooving Shape & Size In mm		Total No. Of Groove
			Grooving Size	Grooving Shape	
SJUT_SW001A	1" X 1.5"	9mm	1 To 3.5	Half Round	6
SJUT_SW001B	1" X 2.5"	9mm	1.5 To 5	Half Round	8
SJUT_SW001C	1" X 2.5"	9mm	2 To 8	Square	7
SJUT_SW001D	1.5" X 2.5"	18mm	5 To 9	Half Round	5
SJUT_SW001E	1.5" X 2.5"	18mm	4 To 8	V-Shape	5
SJUT_SW001F	1.5" X 4"	19mm	4.7 To 14	Half Round	6
SJUT_SW001G	1.5" X 6"	19mm	4.5 To 18.5	Half Round	8
SJUT_SW001H	1.5" X 8"	19mm	4.5 To 18.5	Half Round	10
SJUT_SW001I	2" X 4"	19mm	4.5 To 14.5	Half Round	6
SJUT_SW001J	2" X 6"	19mm	4.5 To 18	Half Round	8
SJUT_SW001K	2" X 8"	19mm	4.5 To 19	Half Round	10



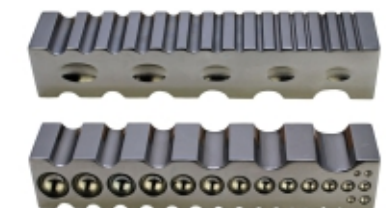
### Double Side Grooving Swage Block

Code	Size	Thickness	Grooving Shape & Size In mm			Total No. Of Groove
			Half Round	Square	V-Shape	
SJUT_SW002A	1.5" X 2.5"	18mm	4 To 8	-	4 To 8	10
SJUT_SW002B	1.5" X 4"	18mm	4 To 13	1.8 To 8.4	3 To 7.8	11
SJUT_SW002C	1.5" X 6"	25mm	4 To 18	3 To 10.5	2 To 9	21
SJUT_SW002D	1.5" X 8"	25mm	4.5 To 20	2 To 11	3 To 10	28
SJUT_SW002E	2" X 4"	25mm	2.5 To 14	2 To 8	3 To 7.5	15
SJUT_SW002F	2" X 6"	25mm	3.5 To 18.5	2.5 To 10	4 To 10	21
SJUT_SW002G	2" X 8"	25mm	4.2 To 19	1.5 To 10.5	2.5 To 10	27



### Steel Grooving Block

Code	Plate Size	Grooving Shape & Size In mm			Total No. Of Groove
		Half Round	Square	V-Shape	
SJUT_SW003A	2" X 2" X 3"	2 To 22	3 To 6	2 To 9	24
SJUT_SW003B	2.5" X 2.5" X 2"	3 To 25	4 To 8	3 To 9	21



### Combination Steel Dapping Block

Code	Size	Grooving Shape & Size In mm				Total No. Of Groove
		Half Round	V-Shape	Oval	Round	
SJUT_SW004	1.5" X 1.5" X 8"	2 To 20	3 To 5	18" X 10" To 22" X 16"	3 To 18	46



Wooden Doming Blocks



Hardwood Dapping block

Code	Size (Inches)
SJIT_WDB001A	1 Round Depression: 5" Dia. X 7/8 Deep
SJIT_WDB001B	1 Round Depression: 5" Dia. X 1-1/32" Deep
SJIT_WDB001C	4 Grooves : 3/8", 1/2", 3/4", 1" Wide
Description	
Rosewood Block Has 2 Large Depression And 4 Grooves	
Measures 6" X 6" X 3-1/4" Overall With Depression On 4 Sides	



4 Cavity Wooden Block Plate

Code	Size (Inches)
SJIT_WDB002A	Diameters: 4,3-1/2, 3, Deep: 3/4
SJIT_WDB002B	Overall Dimensions: 8-1/4" X 1"



Mushroom Punch With Wooden Block

Code	SJIT_WDB003
Punch	H: 125, Dia: 82,75, 70, 63, 57, 51
Size (Inches)	W: 10-3/4", D: 3-7/8" H: 2-1/8"



Hardwood Dapping Punch Block

Code	SJIT_WDB004
Punch	Dia. 3/, 1-1/2", 1-13/16", 2-3/8"
Size (Inches)	W: 11", D: 6/14 H: 3"



50mm Wooden Dapping Block With Punch

Size : 2" X 2"  
Code : SJIT\_WDB005



70mm Wooden Dapping Block With Punch

Size : 2.75" X 2.75"  
Code : SJIT\_WDB006



8 Piece Wooden Dapping Doming Punch Block Set Metal Forming

Size : 11mm To 31mm  
Code : SJIT\_WDB007



Cupola Wooden Dapping Punch Die Set

Size : 40mm, 45mm, 50mm, 60mm  
Code : SJIT\_WDB008



Wooden Doming Dapping Swage Block Set Shaping Punches 6-22mm.

Code : SJIT\_WDB009



Wooden Doming Blocks



7 Pear Shaped Wood Forming Block

Code : SJIT\_WDB010



7 Cavity Round Shaped Wooden Dapping Block

Code : SJIT\_WDB011



7 Cavity Oval Shaped Dapping Block

Code : SJIT\_WDB012



11 Cavity Round Dapping Block

Code : SJIT\_WDB013



11 Cavity Oval Dapping Block

Code : SJIT\_WDB014



11 Cavity Pear Shaped Dapping Block

Code : SJIT\_WDB015



11 Cavity Heart Dapping Block

Code : SJIT\_WDB016



Wood Dapping Block With MS Plate

Code : SJIT\_WDB017



Star Shaped Wooden Dapping Block

Code : SJIT\_WDB018



Multi Shaped Dapping Block With Punch

Code : SJIT\_WDB019



10 Punches With Block

Code : SJIT\_WDB020



# Disc Cutters



**Disc Cutter Round Shape 10 Punches**

Code	SIJT_DC001
Punch Size In mm	1/8" - 1.1/4"(1/8" increments)
Maximum Metal Sheet	Up To 18 Gauge
Punch Height	40mm



**Disc Cutter Round Shape 14 Punches**

Code	SIJT_DC002
Punch Size In mm	3,4,5,6,7,7.5,8,8.5,10,11,12,13,14,16
Maximum Metal Sheet	Up To 18 Gauge
Punch Height	41mm



**Disc Cutter Round Shape 07 Punches**

Code	SIJT_DC003
Punch Size In mm	1/4" - 5/8"(1/16" increments)
Maximum Metal Sheet	Up To 18 Gauge
Punch Height	41mm



**Disc Cutter Square Shape 04 Punches**

Code	SIJT_DC004
Punch Size In mm	10,12.5,15,20
Maximum Metal Sheet	Up To 18 Gauge
Punch Height	40mm



**Disc Cutter Star Shape 05 Punches**

Code	SIJT_DC005
Punch Size In mm	12,15,18,21,23
Maximum Metal Sheet	Up To 18 Gauge
Punch Height	41mm



**Disc Cutter Heart Shape 05 Punches**

Code	SIJT_DC006
Punch Size In mm	12,15,18,21,24
Maximum Metal Sheet	Up To 18 Gauge
Punch Height	40mm

# PERFECTION

For cutting your metal sheet into precise shapes with ease,



# PRECISION

Lend vintage charm to your DIY crafts and jewelry projects using these



## Jewelry Dies



### Bracelet Pressing Dies

Code : SJT\_JD001

We Have More Than 300 Designs For Bangle Pressing Dies. To See All Kindly Download .pdf File From Our Website



### Embossing Dies

Code : SJT\_JD002

We Can Make Any Bespoke Embossing Dies. Kindly Mail Us Your Requirement In Detail



### Metal Stamp

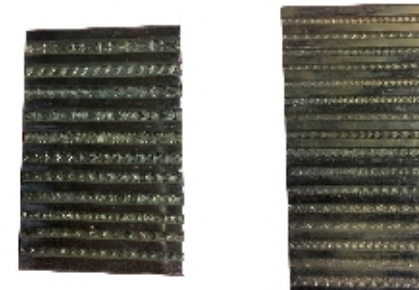
Code : SJT\_JD003

01. Alphabetic Stamp Set A To Z Size 1/32
02. Numeric Stamp Set 0 To 9 Size 1/32
03. Other Bespoke Stamps. Kindly Mail Us For The Same



### PCD Wire Drawing Dies

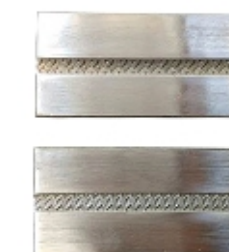
Code	SJT_JD004
Type	01. Tungsten Carbide Dies 02. Diamond Dies
Available Size In Gauge	15 To 36



### Steel Embossing Plate

Code : SJT\_JD005

Available In Different Sizes And Designs. We Can Also Make Bespoke Designs



### Steel Flat Wire Dies

Code : SJT\_JD006

Available In Different Designs. We Can Also Make Bespoke Designs



**EASILY**

For Giving Perfect Round Shape To Prepare Various Sizes Of Bangles And Rings Easily And Quickly.



## Ring & Bangle Machines



**Bangle/Bracelet Stretcher**

Code	SJIT_RM001A	SJIT_RM001B
Model	Bangle Expanding with 8 Strips	Bangle Expanding with 26 Strips
Expand Capacity	Max. 6mm	Max. 7mm
Machine Dimention	5" x 7" x 18"	9" x 19"
Approx Weight	17 kg.	19.500 Kg.



**Ring Stretcher/Enlarger**

Code	SJIT_RM003A	SJIT_RM003B
Model	Light	Deluxe
Approx Weight in Kg.	1.150 Kg.	1.150 Kg.
Collets	1 Set plain+7pcs ∩ Half Round& 6 pcs.(^)*Shape	1 Set plain+7pcs ∩ Half Round& 6 pcs.(^)*Shape

**Mini Roll Press**

Code	SJIT_RM005A	SJIT_RM005B
Model	Mini Roll Press 3" x 1.5 with 3 Rolls Extra	Mini Roll Press 3" x 1.5 with 5 Rolls Extra
No. of Rolls	1 Pair + (3 Roll extra)	1 Pair + (5 Roll extra)
Roller WidthxDiameter	76.2mm x 42.5mm	76.2mm x 42.5mm
Roller Material	EN-31	EN-31
Roller Designs	1. Plain Roller 1 Pair Attached. 2. ∩ Shape - 8 Grooves and ^ Shape - 9 Grooves = 1 3. Frosting and Lining = 1 4. Cross Checkered and Street Chekered = 1	1. Plain Roller 1 Pair Attached. 2. ∩ Shape - 8 Grooves and ^ Shape - 9 Grooves = 1 3. Frosting and Lining = 1 4. Cross Checkered and Street Chekered = 1 5. Wire & Sheet OR Full Wire Pair Any 1 Pair = 2
Maximum Sheet Width Can Be Rolled	25.4mm	25.4mm
Maximum Apertures of Rolls	3mm	3mm
Machine Dimension Without Operating Handle in Inches (L x W x H)	10 x 10 x 10	10 x 10 x 10
Approx Weight in Kg.	18.6 Kg.	21 Kg.
Cover Attached	Yes	Yes



**Bracelet Bangle Rounding Sizing Stretcher Enlarger Expander Machine**

Code	SJIT_RM002A	SJIT_RM002B
Model	Bangle Sizing Machine With 17 Collets	Bangle Sizing Machine With 25 Collets
Collets	Total 17 Collets (38mm to 63.2mm)	Total 25 Collets (38mm to 76.5mm)
Machine Dimension	12" x 9" x 20"	12" x 9" x 20"
Approx Weight in Kg.	31 kg.	40 kg.



**Ring Stretcher & Reducer**

Code	SJIT_RM004A
Size	USA STANDARD 0 TO 15
Dimension	8.5" X 8" X 19"
Approx Weight in Kg.	12 Kg.





# Miscellaneous

## Third Hands



**Double Third Hand Horse Shoe Base**  
Code : SJT\_TH001



**Double Third Hand Round Base**  
Code : SJT\_TH002



**Third Hand Horse Shoe Base**  
Code : SJT\_TH003



**Third Hand Round Base**  
Code : SJT\_TH004

## Brass Joints



**Brass Pipe Joint**  
Code : SJT\_BJ001



**Brass Three Way Joint**  
Code : SJT\_BJ002



**Brass Four Way Joint**  
Code : SJT\_BJ003



**Brass L Joint**  
Code : SJT\_BJ004



**Brass T Joint**  
Code : SJT\_BJ005

## Saw Frames



**Saw Frame Adjustable**  
Code : SJT\_SF001



**Saw Frame Fix**  
Code : SJT\_SF002

## Others



**Drill Set With 5 Collets**  
Code : SJT\_OT001



**Pneumatic Engraving Pen**

Code	Types
SJT_OT002A	Frosting Pen (Pneumatic Pen) Regular
SJT_OT002B	Frosting Pen (Pneumatic Pen) Deluxe



**Gas Lighter**  
Code : SJT\_OT003





# Hammers



**Swiss Style Hammer Big**  
Code : SJT\_H001



**Swiss Style Hammer Small**  
Code : SJT\_H002



**OZ Ball Peen Hammer**  
Code : SJT\_H003



**Two OZ Ball Peen Hammer**  
Code : SJT\_H004



**Four OZ Ball Peen Hammer**  
Code : SJT\_H005



**0.75" Derlin Hammer With Knob**  
Code : SJT\_H006



**1" Derlin Hammer With Knob**  
Code : SJT\_H007



**1.25" Derlin Hammer With Knob**  
Code : SJT\_H008



**1.5" Derlin Hammer With Knob**  
Code : SJT\_H009



**Chaser Hammer 1 1/8" Flat**  
Code : SJT\_H010



**Chaser Hammer 1 1/8" Heavy**  
Code : SJT\_H011



**Chaser Hammer 1" Heavy**  
Code : SJT\_H012



**Chaser Hammer 1" Flat**  
Code : SJT\_H013



**Chaser Hammer With Hockey Handle**  
Code : SJT\_H014



**Double Sided Chaser Hammer With Hocky Handle One Side Flat & One side Dome**  
Code : SJT\_H015



**Chisel Hammer With Blacking**  
Code : SJT\_H016



**Chisel Hammer With Nickle**  
Code : SJT\_H017



**Chisel Hammer In Set Of 4**  
Code : SJT\_H018

# SHAPE IT

As They Can Be Used For A Variety Of Jewelry Repairs And Other Projects.



# Hammers



# Notes



**Goldsmith Hammer**  
Code : SJT\_H019



**Brass Hammer In Set Of 3**  
Code : SJT\_H020



**19mm Nylon Hammer**  
Code : SJT\_H021



**25mm Nylon Hammer**  
Code : SJT\_H022



**38mm Nylon Hammer**  
Code : SJT\_H023



**25mm Nylon Hammer In White Color With Ovel Handle**  
Code : SJT\_H024



**44mm Nylon Hammer**  
Code : SJT\_H025



**1" Wooden Hammer**  
Code : SJT\_H026



**1.5" Wooden Hammer**  
Code : SJT\_H027



**2" Wooden Hammer**  
Code : SJT\_H028



**Nylon Hammer Perl Type**  
Code : SJT\_H029



**Brass & Nylon Hammer**  
Code : SJT\_H030



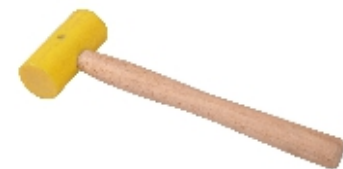
**Hammer With Nylon Knob**

Code	Size
SJT_H0031A	0.75"
SJT_H0031B	1"
SJT_H0031C	1.25"
SJT_H0031D	1.5"



**Derlin Hammer With Tapered Knob**

Code	Size
SJT_H0032A	0.75"
SJT_H0032B	1"
SJT_H0032C	1.25"
SJT_H0032D	1.5"



**Nylon Hammer In Yellow Color With Round Handle**

Code	Size
SJT_H0033A	1.25"
SJT_H0033B	1.5"
SJT_H0033C	2"
SJT_H0033D	2.5"



**40mm Nylon Hammer In Yellow Color With Ovel Handle**  
Code : SJT\_H034

